

## A Modulus™ Microplate Absorbance Method for Coomassie (Bradford™) Assay Kit

---

### 1. INTRODUCTION

The Turner BioSystems Modulus™ Microplate reader used in conjunction with the Pierce's Coomassie (Bradford™) Assay Kit allows for rapid and accurate measurement of protein concentrations in small-volume microplates (200 µL per well). The Coomassie (Bradford™) Kit is a quick and easy to use modification of the well-known Coomassie-binding, colorimetric method for total protein quantitation. When Coomassie dye binds protein in an acidic medium, an immediate shift in maximum absorption occurs from 465 nm to 595 nm with a concomitant change from brown to blue.

Performing the assay in a microplate is simple. Combine a small amount of protein sample with the assay reagent, mix well, incubate briefly, and measure the absorbance at 600 nm using the Modulus™ Microplate Absorbance Reader. Protein concentrations can be determined by use of a standard curve that is assayed alongside the unknowns. Since the color response with Coomassie (Bradford™) Kit is non-linear with increasing protein concentrations, it is important to run a standard curve with each assay.

Use of the Modulus™ Microplate Absorbance Reader by Turner BioSystems in combination with Pierce's Coomassie (Bradford™) Assay Kit provides a convenient procedure for quantifying protein. The Absorbance Module is able to detect as little as 2.5 µg/mL of BSA when used with the Coomassie (Bradford™) Assay Kit.

### 2. MATERIALS REQUIRED

- Modulus™ Microplate Multimode Reader
- Absorbance Optical Kit
- Black/clear bottom 96-well microplates (Nalge Nunc, P/N 265301)

- Coomassie (Bradford™) Assay Kit (Pierce, 23200), containing:
  - ▶ Coomassie (Bradford™) Assay Reagent (950 mL of solution)
  - ▶ Albumin Standard Ampules (BSA), 2 mg/mL (10 x 1 mL ampules)

**Note:** Handling, storage, and the use of reagents should be performed in accordance with the product information sheet supplied by Pierce.

### 3. EXPERIMENTAL PROTOCOL

#### 3.1 Mixing and Equilibrating the Coomassie Reagent

Mix the Coomassie reagent solution immediately before use by gently inverting the bottle several times. Remove the amount of reagent needed and equilibrate it to room temperature (RT) prior to use.

#### 3.2 Preparation of Diluted Albumin (BSA) Standards

Dilute stock of Albumin Standard (BSA) ampule according to the diluted albumin (BSA) standards described in Tables 1 and 2 using the same diluent as in the samples.

#### 3.3 Standard Microplate Protocol (Upper Range)

1. Pipette 5 µL of each standard or unknown sample into the appropriate microplate wells.
2. Add 250 µL of Coomassie reagent to each well and mix with plate shaker for 30 seconds.
3. Remove plate from shaker. For maximum result consistency, incubate the microplate for 10 minutes at RT.
4. Measure the absorbance at 600 nm using the Modulus™ Microplate Multimode Reader.

5. Subtract the average value of the reagent blank from all other individual standard and unknown sample replicates. Use corrected data to generate a standard curve of absorbance verses protein concentration. Then use this standard curve to determine protein concentrations of unknown samples.

5. Subtract the average value of the reagent blank from all other individual standard and unknown sample replicates. Use corrected data to generate a standard curve of absorbance versus protein concentration. Then use this standard curve to determine protein concentrations of unknown samples.

Vial	Volume of Diluent	Volume and Source of BSA	Final BSA Concentration
A	0	300 µL of stock	2000 µg/ml
B	125 µL	375 µL of stock	1500 µg/ml
C	325 µL	325 µL of stock	1000 µg/ml
D	175 µL	175 µL of vial B dilution	750 µg/ml
E	325 µL	325 µL of vial C dilution	500 µg/ml
F	325 µL	325 µL of vial E dilution	250 µg/ml
G	325 µL	325 µL of vial F dilution	125 µg/ml
H	400 µL	100 µL of vial G dilution	25 µg/ml
I	400 µL	0	0 µg/ml = Blank

**Table 1:** High-Range Dilution

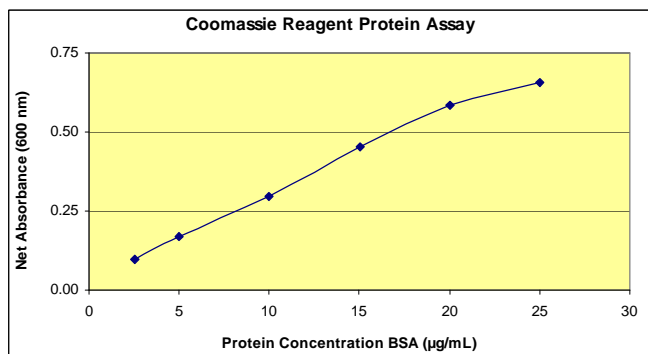
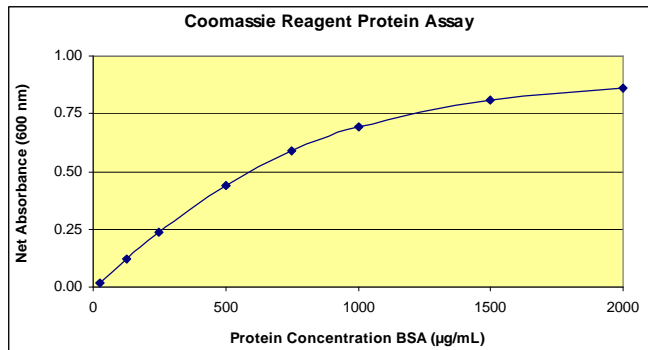
### 3.4 Standard Microplate Protocol (Lower Range)

1. Pipette 150 µL of each standard or unknown sample into the appropriate microplate wells.
2. Add 150 µL of Coomassie reagent into each well and mix with plate shaker for 30 seconds.
3. Remove plate from shaker. For maximum result consistency, incubate the microplate for 10 minutes at RT.
4. Measure the absorbance at 600 nm using the Modulus™ Microplate Multimode Reader.

**Note:** If using curve-fitting algorithms associated with a microplate reader, a four parameter (quadratic) or best-fit curve will provide more accurate results than a purely linear fit. If plotting by hand, a point-to-point curve is preferable to a linear fit to the standard points.

Vial	Volume of Diluent	Volume and Source of BSA	Final BSA Concentration
A	2370 µL	30 µL of stock	25 µg/ml
B	4950 µL	50 µL of stock	20 µg/ml
C	3970 µL	30 µL of stock	15 µg/ml
D	2500 µL	2500 µL of vial B dilution	10 µg/ml
E	2000 µL	2000 µL of vial D dilution	5 µg/ml
F	1500 µL	1500 µL of vial E dilution	2.5 µg/ml
G	5000 µL	0	0 µg/ml = Blank

**Table 2:** Low-Range Dilution



**Figure 1.** Typical protein concentration curves for BSA when measured with the Modulus™ Microplate Reader.

## 4. RESULTS

### Sensitivity:

- < 2.5 µg/mL

### Instrument Dynamic Range:

- 0 – 4.0 OD @ 450 - 700 nm

### Minimum Detection Limit:

- 1.18 µg/mL
- Calculated using 3 x standard deviation of the assay background, n = 24

## 5. CONCLUSION

The Modulus™ Microplate Reader offers both superior sensitivity and dynamic range. The Modulus™ Microplate Reader achieves its superior performance by use of a dedicated fluorescence detector instead of sharing

equipment with other detection modes. The individual Optical Kit offers solid-state optics and a powerful wavelength-matched LED to deliver excellent sensitivity and dynamic range.

The modular approach of the Modulus™ Microplate Reader allows for instrument capability expansion as needs in the lab change. Luminescence and/or Absorbance Detection Modules as well as other accessories can be added after the initial purchase.

Superior performance, ease of use, and the utmost flexibility of the Modulus™ Microplate Reader make it an ideal instrument for today's life science laboratory.

## 6. REFERENCES

1. Pierce Data Sheet 23200: Coomassie (Bradford™) Assay Kit

## TRADEMARKS

For research use only. Not for use in diagnostic procedures. Modulus is a trademark of Turner BioSystems, Inc. All other trademarks are the sole property of their respective owners.

## TURNER BIOSYSTEMS CONTACT INFORMATION

Please use the following contact information to place orders for Turner BioSystems products.

Phone: (408) 636-2400 or  
Toll Free: (888) 636-2401 (USA and Canada)  
Fax: (408) 737-7919

Web Site: [www.turnerbiosystems.com](http://www.turnerbiosystems.com)

Mailing Address:

Turner BioSystems, Inc.  
645 N. Mary Avenue  
Sunnyvale, CA 94085 USA